

A PERFECT

BALANCE

Modern Post & Beam Home

NEWBORO 2

3 Bed • 3 Bath • 3,160 sq.ft.

**Take a Peak Inside this Spectacular
Modern Post and Beam Home**

The Perfect Plan is a Plan Designed for YOU!



Newboro 2 Custom Home

With such a fantastic lake frontage, the main objective was to optimize the view from every room in the house.

The spectacular high ceilings and floor-to-ceiling windows are nothing short of breathtaking in the full light of day. The main floor's 8-foot vaulted ceiling has several beams and floor-to-ceiling windows to highlight the stunning views of the lake while also letting in more natural light



Planning to build?
View the hundreds of plans
and designs on our website
to get started.
cedardesigns.com



A huge open kitchen and dining area are featured in the Newboro 2 modern post and beam home. The great room is a huge, comfortable, and inviting enclosure on the main floor with amazing panoramic views.

The Newboro 2 post and beam is a modern two-level 3,160-square foot home with three bedrooms, three bathrooms, a full kitchen, and a spacious family room on the lower level and a spacious great room on the main level

Newboro 2 - 3 Bed • 3 Bath

Main Floor: 1,580

Lower Floor: 1,580

Width: 77 - Depth: 40

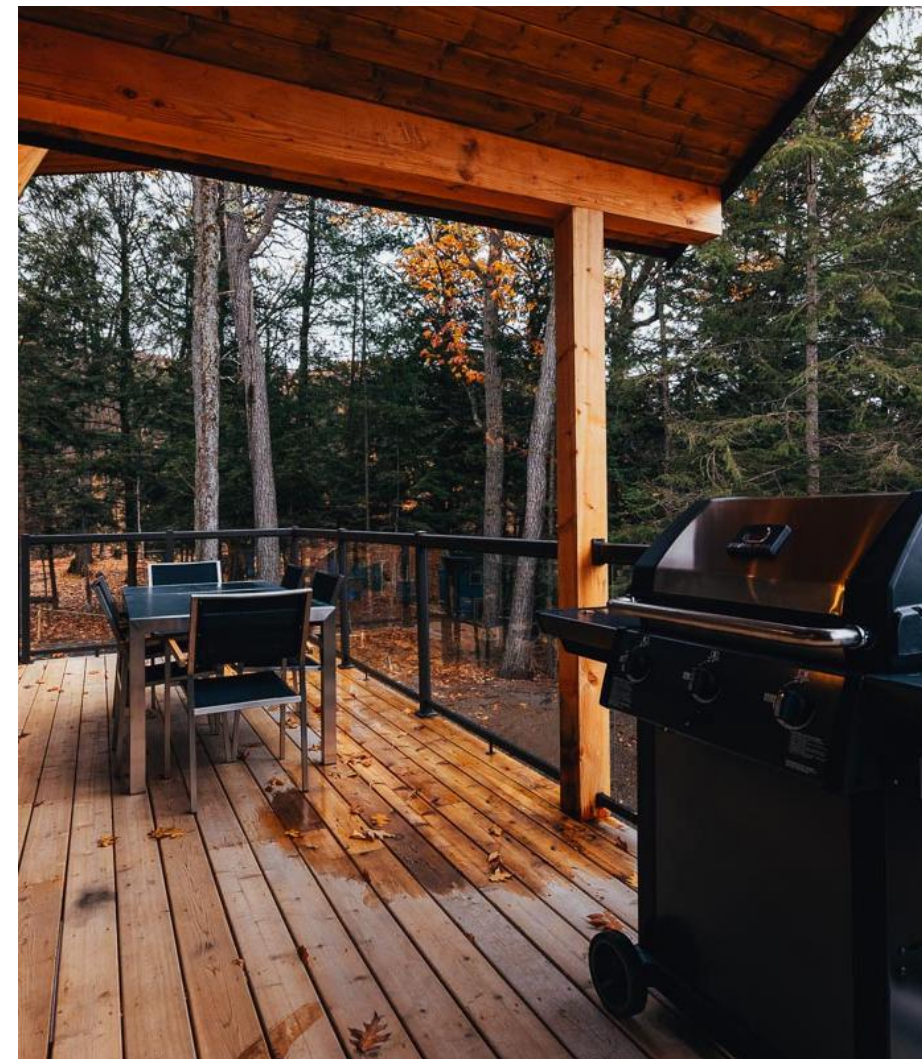
Covered Entry / Porch: 72

Balcony / Deck: 236

Total Living: 3,160 - Total Area: 3,468



All the bedrooms on the lower level and main floor have spectacular water views.



Newboro 2 Custom Home

The Newboro 2 post and beam home includes a screened porch and a covered deck. You can transform the screened porch and covered deck into almost anything.

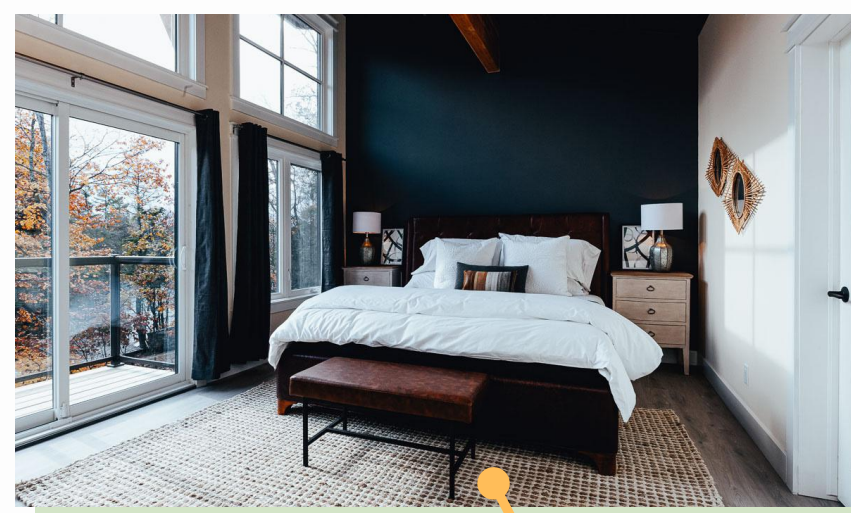
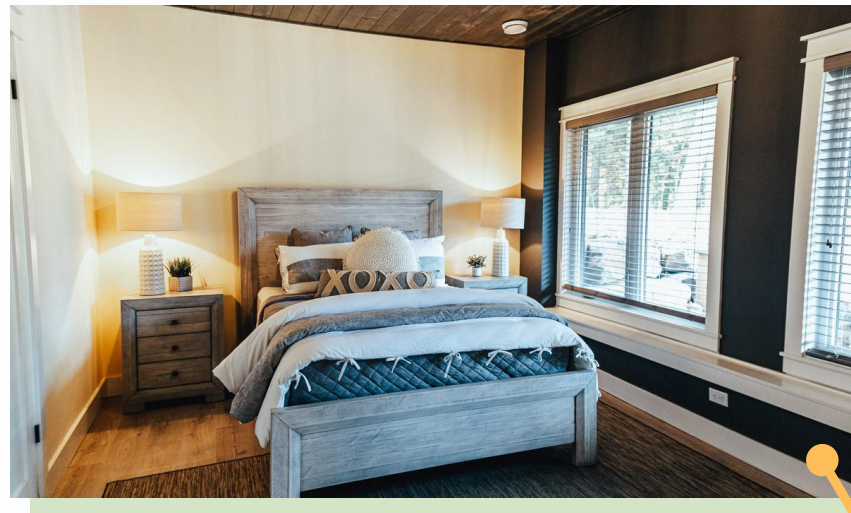
The porch and covered deck have the advantage of providing a complete view of the outdoors, such as the lake, river, or mountain range.



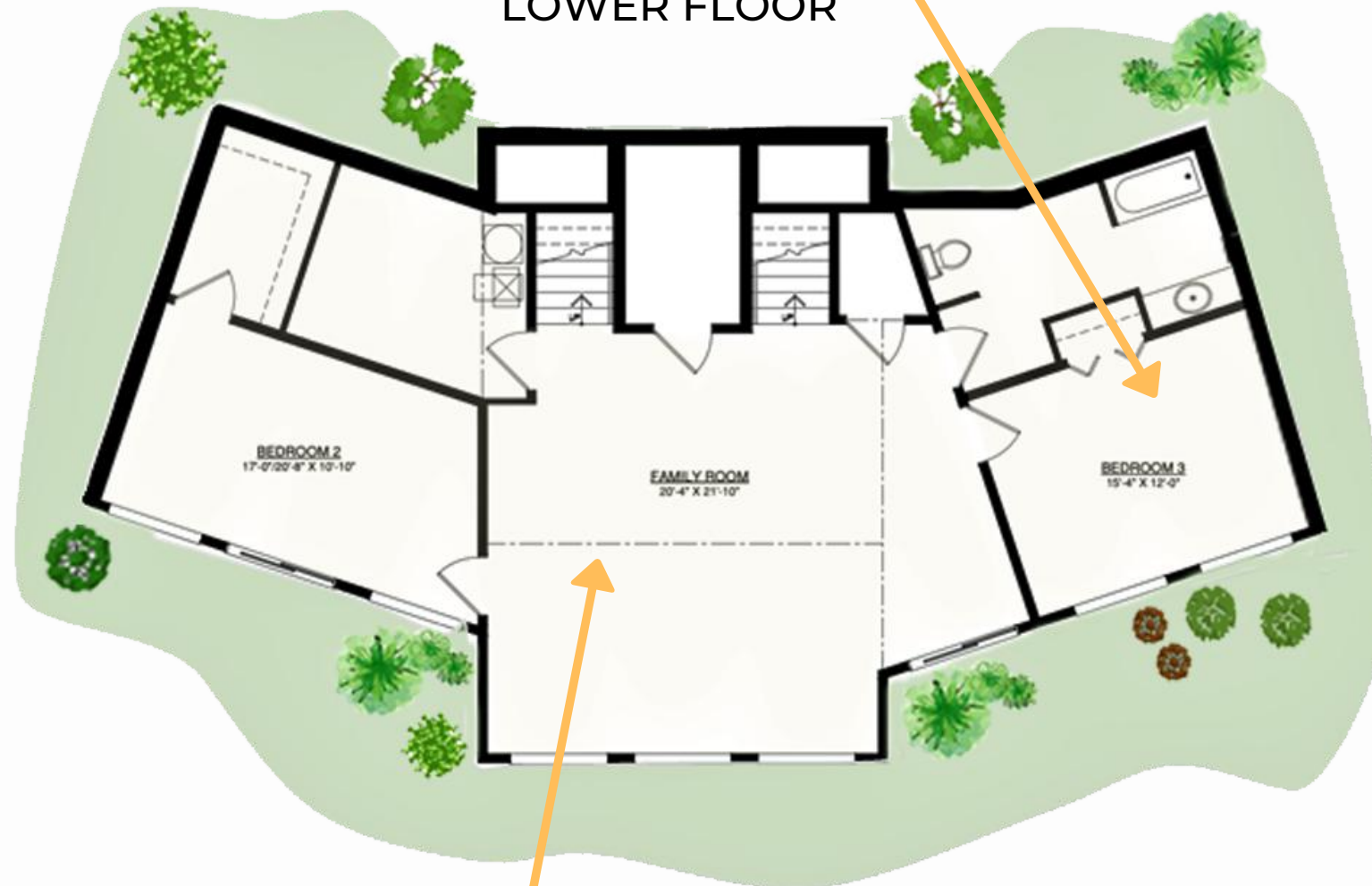
The two-story floor plan features a master bedroom on the main floor and two bedrooms on opposite sides of the bottom floor, separated by the family area, to provide the openness and privacy desired by visiting family and visitors.

The great room is a huge, comfortable, and inviting enclosure on the main floor with amazing panoramic views. It's the perfect spot for curling up with a good book on a plush sofa or simply admiring nature in all its glory.

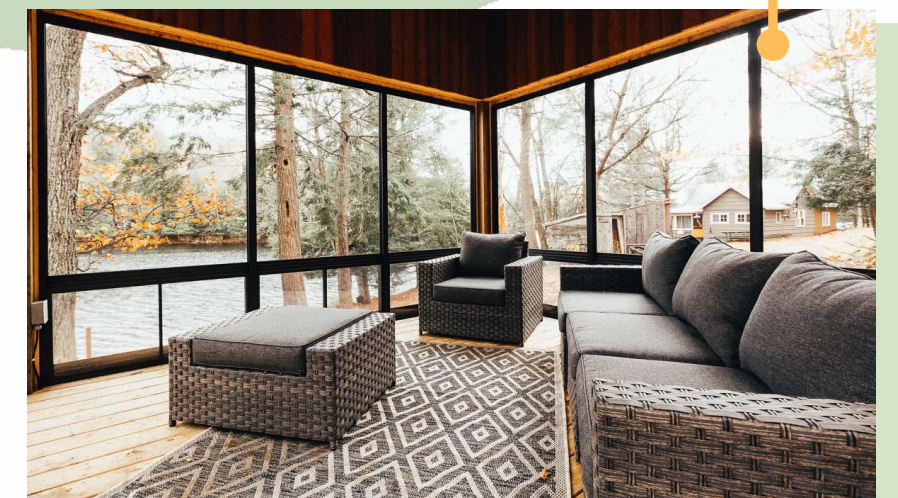
The kitchen and Dining room are open to the great room. This is undoubtedly the home's central gathering location.



LOWER FLOOR



MAIN FLOOR





CEDAR HOMES
BY CEDAR DESIGNS, LLC

PO Box 1123 | Carson, WA 98610

Visit our website

www.cedardesigns.com

for more information on our custom homes,
helpful articles, frequently asked questions,
view over 500 hundred floor plans with photo gallery,
plus much more.



Contact us today for a price quote or details
cedardesigns.com

800-728-4474

