

# The *Cansion*

Plan of the Month | July 2017



## Square Footage

MAIN FLOOR	2290
UPPER FLOOR	1244
UNFINISHED/ BONUS AREA	-
<b>TOTAL LIVING AREA</b>	<b>3534</b>
<b>GARAGE</b>	<b>534</b>
<b>COVERED ENTRY/PORCH</b>	<b>648</b>
<b>BALCONY/ DECK</b>	<b>-</b>
<b>TOTAL AREA</b>	<b>4716</b>

## Dimensions

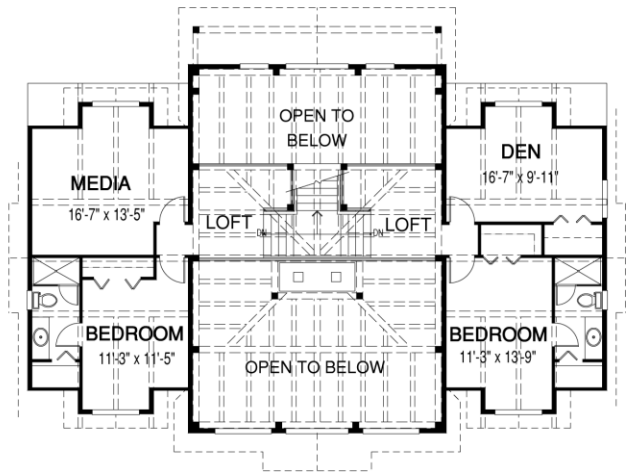
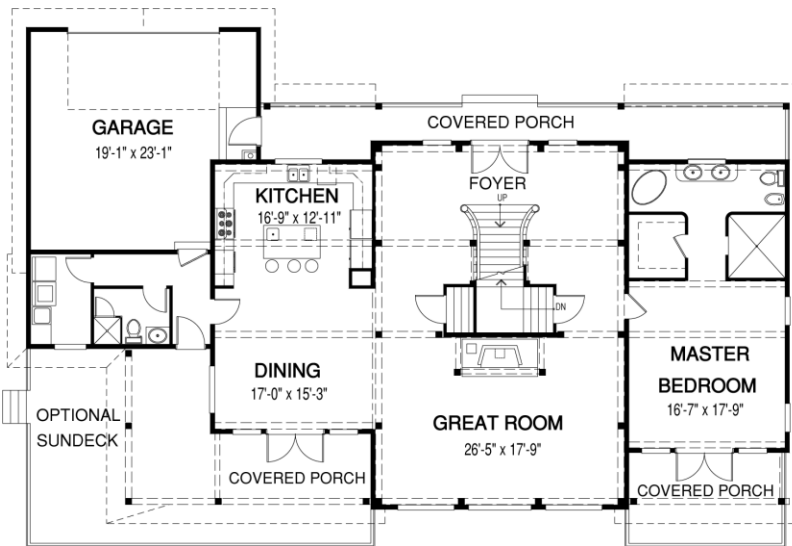
WIDTH	DEPTH
81	51

Designs, Images & Plans



MAIN FLOOR

UPPER FLOOR



The Cansion is a Timber Frame home beyond all measure in terms of creating a true sense of wonder. The use of carefully-crafted Douglas fir solid timbers is spectacular. The central staircase is a key focal point of this magnificent home.



**CEDAR HOMES**  
BY CEDAR DESIGNS, LLC

Contact us today for a price quote or details: [cedardesigns.com](http://cedardesigns.com) • 1-800-728-4474