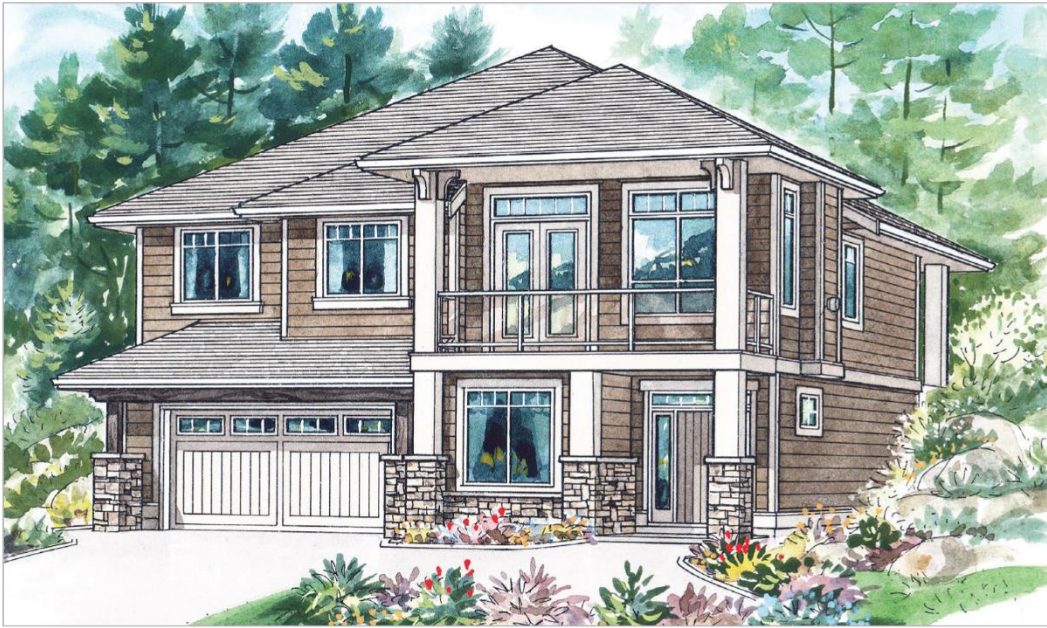


The *Eckhart* (2-3-759)

TRADITIONAL



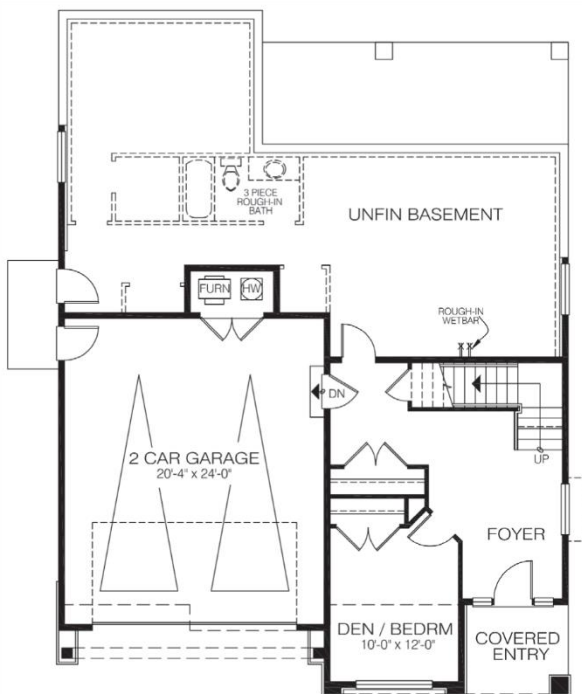
Square Footage	
MAIN FLOOR	1644
UPPER FLOOR	—
LOWER FLOOR	1217
TOTAL LIVING AREA	2861
GARAGE	510
COVERED ENTRY/PORCH	249
BALCONY/DECK	—
TOTAL AREA	3620

In this handsome home, the living areas are on the upper floor, while the main entrance is at ground level. This plan is a great choice for lots where extensive excavation is not possible.

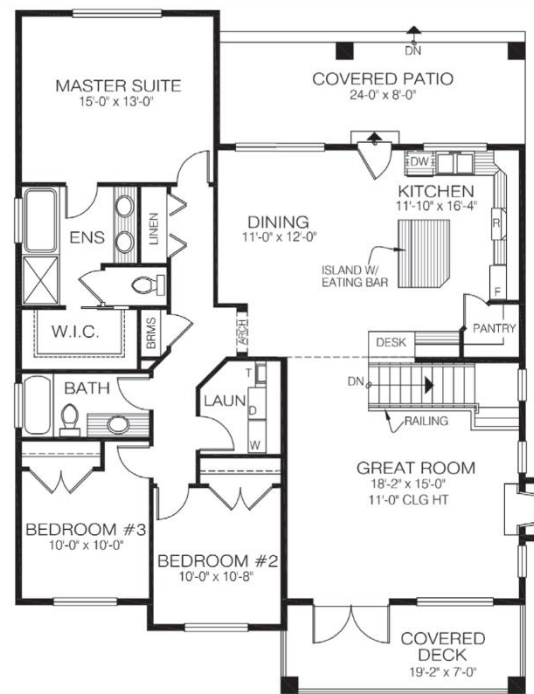
Dimensions	
WIDTH	DEPTH
40	53

Designs, Images & Plans © Jenish House Designs Limited

LOWER FLOOR



MAIN FLOOR



Contact us today for a price quote or details:
cedardesigns.com 800-728-4474

TRADITIONAL: This home package includes design, construction plans, and all the materials required to build the structure of this home to the lock-up stage. Materials include export-grade framing lumber, an engineered wood truss system, low-maintenance siding and energy-efficient windows. This design features the use of conventional construction methods. It can be modified to suit individual site conditions.

