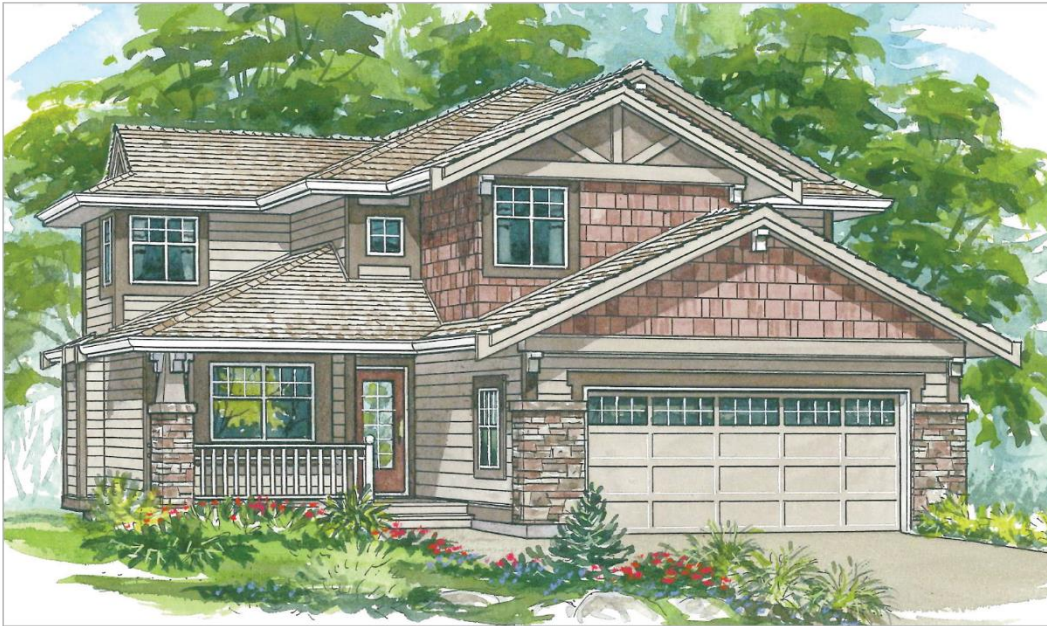


The *Barlow* (7-3-902)

TRADITIONAL



The Barlow is ideal for a narrow lot. It offers room for expansion on the lower level. On the upper floor, the great room and dining room feature a high, sloping ceiling.

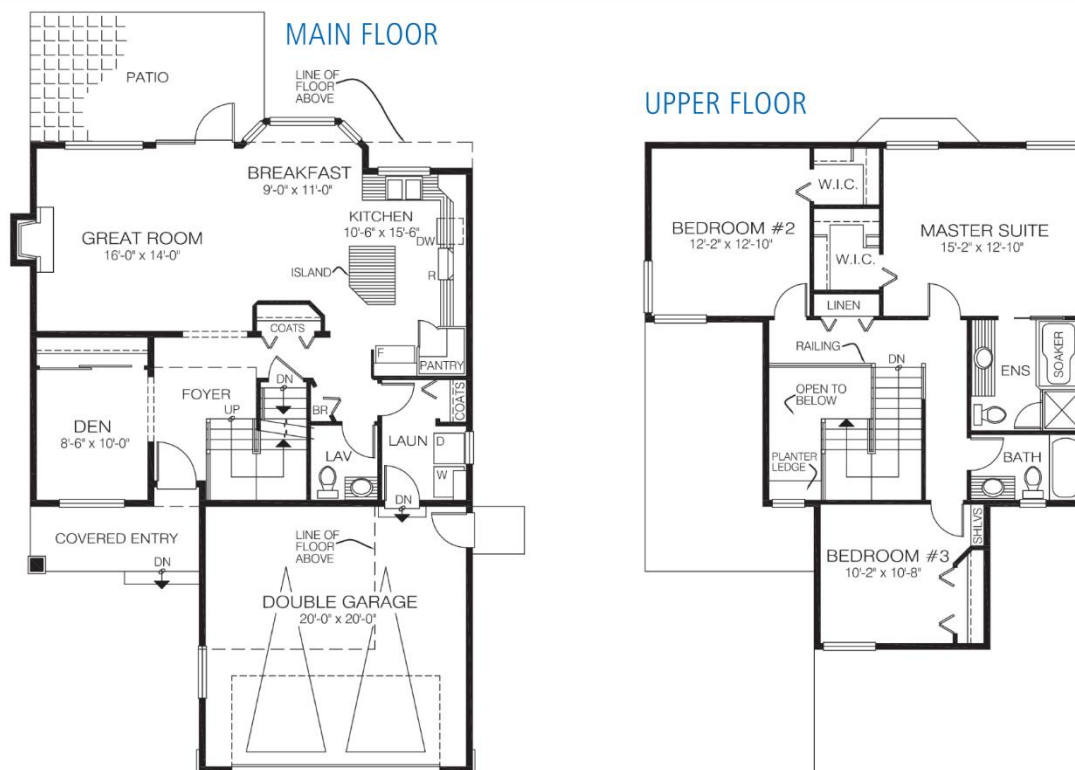
Square Footage

MAIN FLOOR	945
UPPER FLOOR	916
LOWER FLOOR	—
TOTAL LIVING AREA	1861
GARAGE	430
COVERED ENTRY/PORCH	65
BALCONY/DECK	—
TOTAL AREA	2356

Dimensions

WIDTH	DEPTH
34	49

Designs, Images & Plans © Jenish House Designs Limited



Contact us today for a price quote or details:
cedardesigns.com 800-728-4474

TRADITIONAL: This home package includes design, construction plans, and all the materials required to build the structure of this home to the lock-up stage. Materials include export-grade framing lumber, an engineered wood truss system, low-maintenance siding and energy-efficient windows. This design features the use of conventional construction methods. It can be modified to suit individual site conditions.

