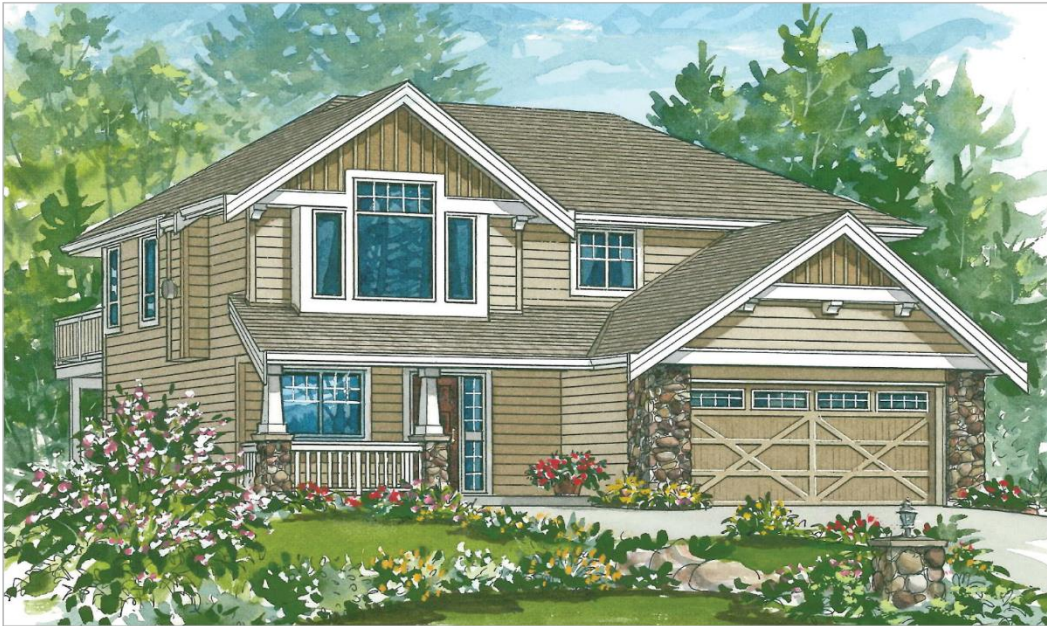


# The *Hudson* (2-3-717)

TRADITIONAL

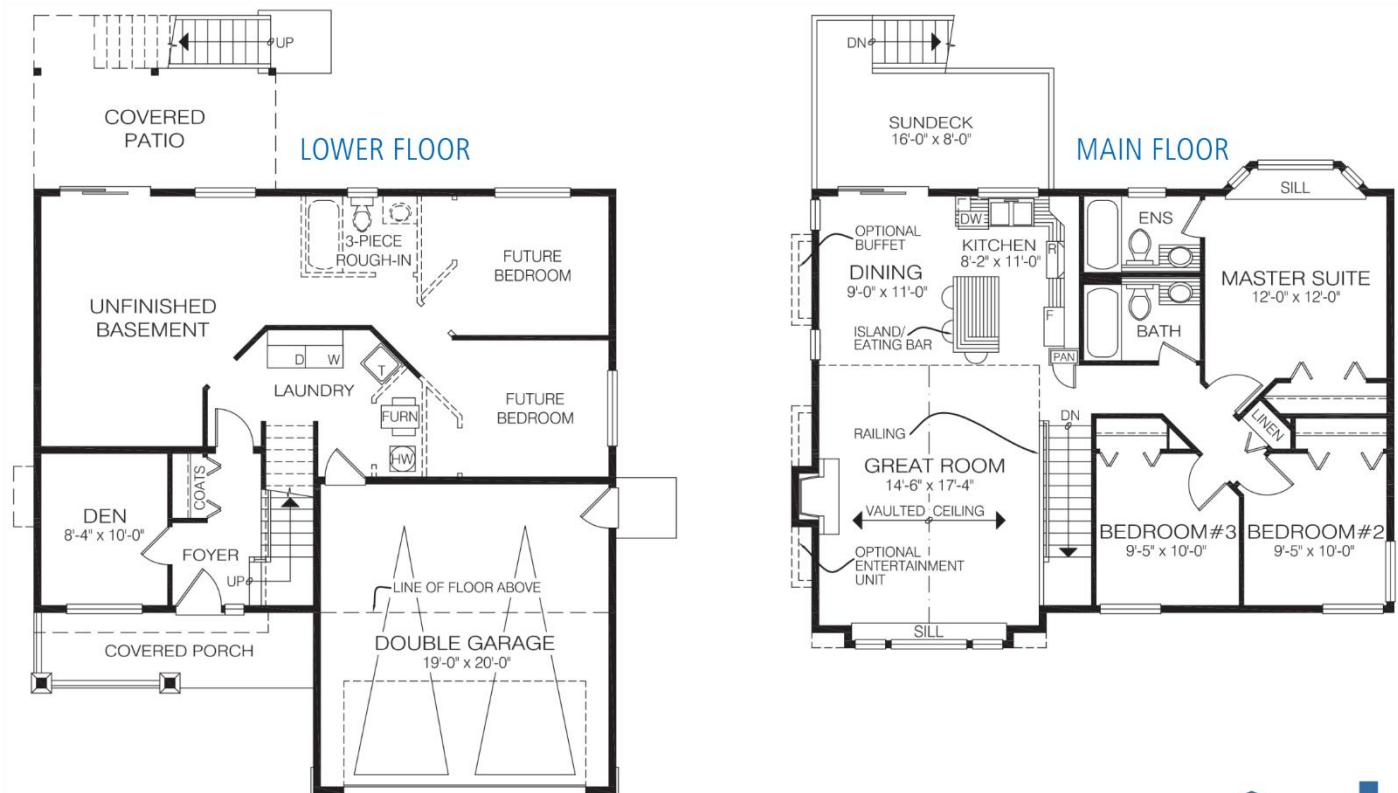


<b>Square Footage</b>	
MAIN FLOOR	1099
UPPER FLOOR	—
LOWER FLOOR	912
<b>TOTAL LIVING AREA</b>	<b>2011</b>
GARAGE	406
COVERED ENTRY/PORCH	93
BALCONY/DECK	142
<b>TOTAL AREA</b>	<b>2652</b>

The Hudson features an entry with impressive porch. Its layout is ideal for a family with young children. The main living area is next to the kitchen, and on the same level as the bedrooms.

<b>Dimensions</b>	
WIDTH	DEPTH
39	40

Designs, Images & Plans © Jenish House Designs Limited



Contact us today for a price quote or details:  
[cedardesigns.com](http://cedardesigns.com) 800-728-4474

**TRADITIONAL:** This home package includes design, construction plans, and all the materials required to build the structure of this home to the lock-up stage. Materials include export-grade framing lumber, an engineered wood truss system, low-maintenance siding and energy-efficient windows. This design features the use of conventional construction methods. It can be modified to suit individual site conditions.

