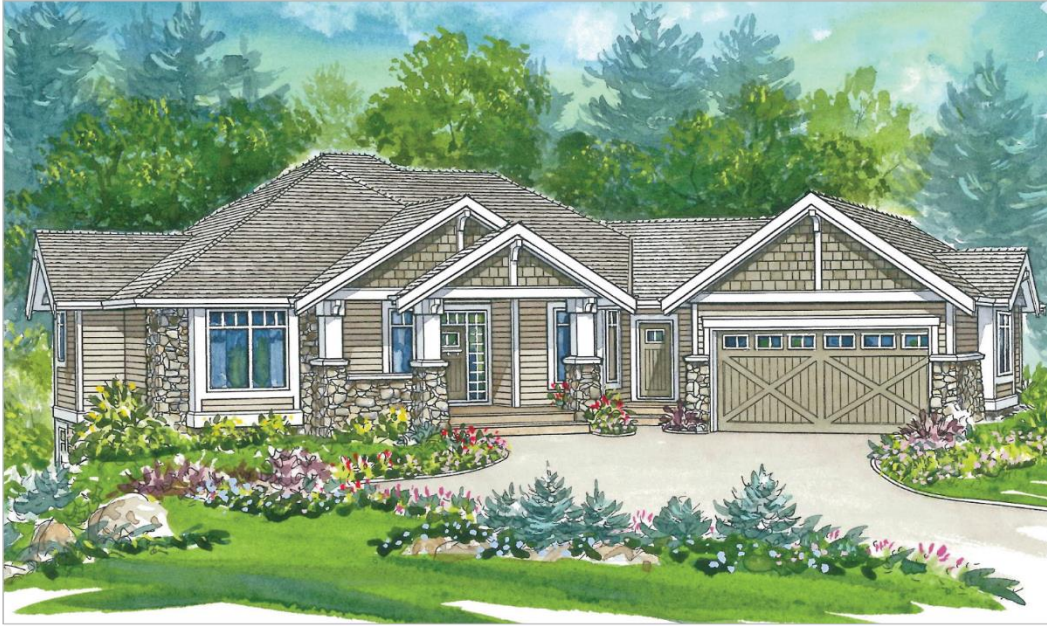


The *Boynton* (1-2-624)

TRADITIONAL



Square Footage

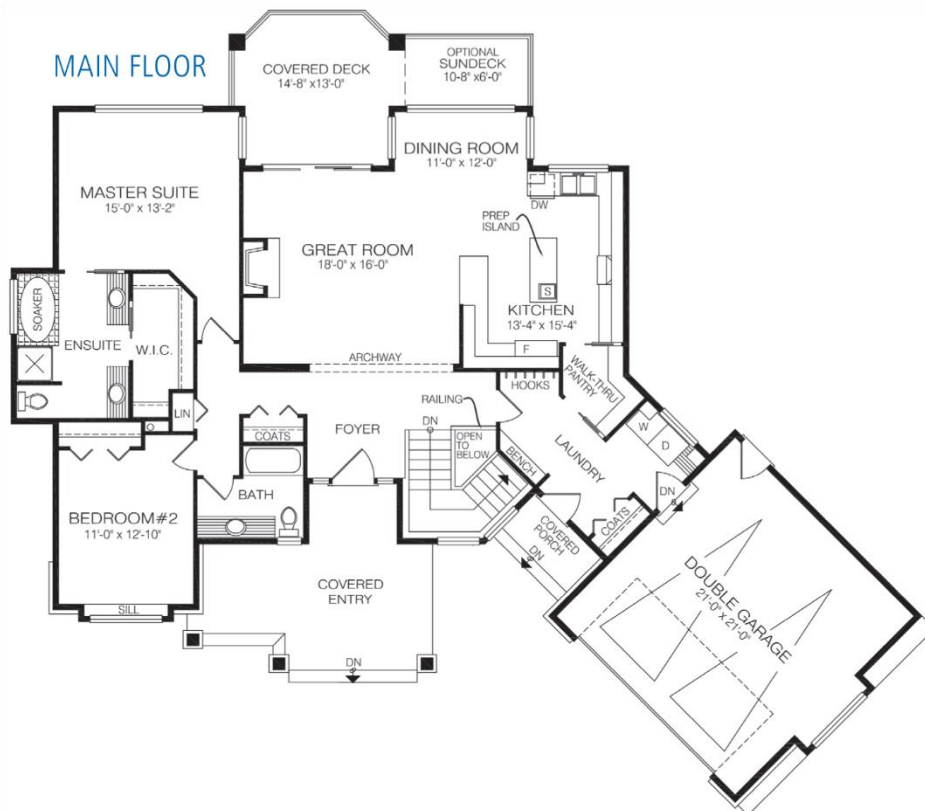
MAIN FLOOR	1773
UPPER FLOOR	—
LOWER FLOOR	—
TOTAL LIVING AREA	1773
GARAGE	492
COVERED ENTRY/PORCH	415
BALCONY/DECK	—
TOTAL AREA	2680

Dimensions

WIDTH	DEPTH
76	64

The Boynton is designed for a lot that slopes to the back. As part of its smart layout, the garage and laundry room/mud room extend at an angle from the main part of the home.

Designs, Images & Plans © Jenish House Designs Limited



Contact us today for a price quote or details:
cedardesigns.com 800-728-4474

TRADITIONAL: This home package includes design, construction plans, and all the materials required to build the structure of this home to the lock-up stage. Materials include export-grade framing lumber, an engineered wood truss system, low-maintenance siding and energy-efficient windows. This design features the use of conventional construction methods. It can be modified to suit individual site conditions.

